



Highlights

- Provides full-featured email, calendaring, contact management and instant messaging—via a web browser or Notes client
 - Lets you access your email on-the-go from mobile devices
 - Integrates with existing on-premise infrastructure and applications with hybrid capabilities
 - Includes robust security features and built-in virus and spam protection
 - Helps control costs with predictable pricing models—often for less than an in-house solution
 - Helps reduce capital expenditures with little to no up-front investment
-

IBM SmartCloud Notes

Reduce IT cost and complexity with full-featured business email from the IBM cloud

IBM® SmartCloud® Notes is a full-featured email, calendar, contact management and instant messaging service in the IBM cloud. With SmartCloud Notes, you can access these capabilities over the Internet with a web browser or with the IBM Notes® client.

Moving your email to the cloud can help you reduce expenses, preserve your application investment and simplify your IT requirements freeing up valuable resources. Delivered as a software-as-a-service, SmartCloud Notes is designed to let your business rapidly roll out leading-edge messaging capabilities for users at predictable costs and with limited capital investment and IT management. And unlike competitive offerings, SmartCloud Notes builds upon years of IBM expertise in delivering business-class, security-rich services.

SmartCloud Notes features:

- Use calendaring and scheduling capabilities for meetings, appointments and reminders across time zones
- Communicate with business contacts via built-in instant messaging and receive the quick replies you need without ever picking up the phone
- Choose the optional IBM SmartCloud Traveler for Notes service to access email, calendar and contacts from various mobile devices including Apple iPhone, Apple iPad, Windows Mobile, Google Android, BlackBerry 10 and Nokia Symbian mobile devices
- Choose the optional SmartCloud Notes Hosted BlackBerry Service to access email, calendar and contacts from your BlackBerry device
- Use hybrid capabilities for integrating with an existing Domino® infrastructure enabling your company administrator to continue managing users and groups using familiar on-premises tools
- Take advantage of Notes-to-Notes encryption and Transport Layer Security for internet network traffic
- Utilize the optional SmartCloud Archive Essentials email archive solution to capture and retain the content of users email messages for later legal discovery
- Support for IMAP clients including Microsoft Outlook 2003 and 2007, Mozilla Thunderbird 9.0.1, Apple Mail 4 and 5
- Available in 22 languages

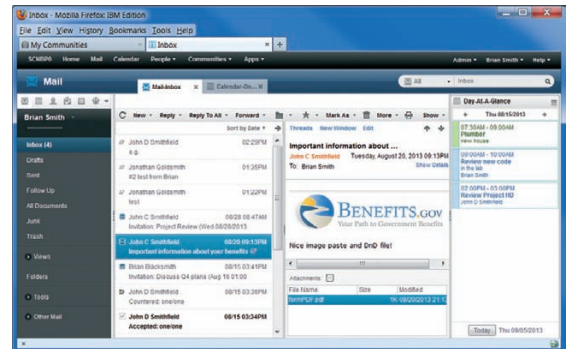


SmartCloud Notes provides security-rich features designed to help protect enterprise data including:

- Built-in spam and virus protection services
- Secure Sockets Layer encryption and secure password recovery
- Digital signatures and per-message encryption
- Data encryption at rest, opportunistic Transport Layer Security encryption in transit
- Support for Federated identity via Security Assertion Markup Language
- Governance processes/policy enforcement
- IBM compliance programs deployed throughout the delivery environment
- IBM data center and operational processes consistent with SAS 70 Type II and SSAE 16 controls testing

With SmartCloud Notes, you can expect:

- Affordable and accessible cloud services
- Low upfront investment
- Predictable expenses via monthly and annual subscriptions
- Minimal IT staff required



IBM SmartCloud Notes gives you a single point of access to email, calendars, contacts, instant messaging, collaboration tools and business applications.



© Copyright IBM Corporation 2013

IBM Corporation
Software Group
Route 100
Somers, NY 10589 U.S.A.

Produced in the United States of America
September 2013

IBM, the IBM logo, ibm.com, IBM SmartCloud, Lotus, Domino, and Notes are trademarks or registered trademarks of International Business Machines Corporation in the United States, other countries, or both. If these and other IBM trademarked terms are marked on their first occurrence in this information with a trademark symbol (® or ™), these symbols indicate U.S. registered or common law trademarks owned by IBM at the time this information was published. Such trademarks may also be registered or common law trademarks in other countries. A current list of IBM trademarks is available on the web at “Copyright and trademark information” at: ibm.com/legal/copytrade.shtml

Adobe is a registered trademark of Adobe Systems Incorporated in the United States, and/or other countries.

Microsoft and Windows are trademarks of Microsoft Corporation in the United States, other countries, or both.

Other product, company or service names may be trademarks or service marks of others.



System Requirements at a glance

Systems must meet the following minimum requirements:

For SmartCloud Notes client access

- IBM Lotus® Notes 8.5.1 FP5 and higher

For SmartCloud Notes web access

For the full updated list of supported browsers please see our website at: ibmcloud.com/social/systemrequirements/

For SmartCloud Notes and IMAP client access

- Outlook 2003
- Outlook 2007
- Thunderbird 9.0.1
- Apple Mail 4
- Apple Mail 5

For SmartCloud Notes and mobile access

- **SmartCloud Notes Traveler** supported Smart Phones: Apple iOS 5.†, Google Android OS 2.2†, and BlackBerry OS 10 devices; supported Tablets: Apple iOS 5.†, Google Android OS 2.2†
- **SmartCloud Notes Hosted BlackBerry** BlackBerry OS 7.†

For more information

Learn more about SmartCloud Notes at: ibmcloud.com/social